

Welcome to Drivers Education!

Segment 1 will have 12 classes, each 2 hours in length. completed Virtually On-line. At the end of the 12 class sessions, a written test will be given in person at either the Midland, Caro, or Birch Run locations.

Attendance is very important! Make up days are limited. And will delay completion of the course

The State of Michigan has a set of rules that must be followed

🚗 State of Michigan Virtual Class Rules

🚗 Students must be visible to the instructors at all times during the class.

🚗 Student attendance must be monitored constantly throughout the class session and attendance taken at the beginning of the class, end of the class, and after any breaks. Any student missing at any attendance taken during class or during any observation by the instructor or proctor shall not receive credit for that day's class.

🚗 Students should be encouraged to limit distractions that prevent them from fully participating in the session. If an instructor or proctor observes a student engaging in activity unrelated to the classroom, the student must be given a verbal warning. Upon a second occurrence of unrelated activity during a class session, the instructor must terminate the student from that days class session. The student shall not receive credit for that class day.

Our instructors are Mr. Nelson, Mrs. Salinas, Mrs. Stewart, Mrs. Bourbina, Mrs. Leach, and Mrs. Tucker. We encourage you to ask any questions you may have at any time! Remember we are HERE TO HELP YOU!

Drives start at one of our locations Birch Run, Caro, Midland, or Reese. There will be 6 drives completed in person. In addition, students must also observe other drivers for a minimum of 4 drives. The typical drive is two hours with two students and an instructor in the car.

Always have your study guide folder and pencil during class and **DRIVES** always. If you lose your study guide print a new one you will be turning it in complete on test day to be able to complete this course.

No Food, Candy or Gum in our cars. Water in bottles with caps only! NO Flip Flop sandals on drive days shoes must have a heel cup or heel strap.


Cell Phones, etc. are **NOT** to be in use at any time during driving instruction. Repeated infractions and we are required to drop you from class.

Destructive or disruptive behavior in car will not be tolerated. Failure to comply with any of the above rules may result in being dismissed from that day's drive.

You **MUST** call 24 hours in advance to cancel a driving appointment. Not calling to cancel will result in a \$20 re-scheduling fee.

Thank you for your full cooperation.

Info WEDK pdf & audio version, Logs at [DriveThis.net/resources](https://www.drivethis.net/resources)

Ample	Plenty of, a lot of	
Berm	Another word for "shoulder of road".	
Curb	The cement bump on edge of a street.	
Door Dings	Small dents from car doors hitting cars.	
Dutch Reach	Driver opens door with right hand reminding driver to look for bikes.	
Equestrian	A horse rider.	
Fringe	Just the outside edge	
Glancing blow / Sideswipe	Not hitting something head on.	
In terms of	About.	
Inclement Weather	Bad weather.	
Inertia	Anything stopped wants to stay stopped anything moving wants to keep moving.	
Intersection	Where two or more roads come together.	
Kelsey's Law	No Cell phones for Level 1 and 2 drivers	
Minimal	Smallest.	
Momentum	The force or power of an object moving in a straight line.	
Open Roadway	Country Roads	
Pennant	A sideways triangle.	
Perception	See and recognize.	
Prudent	Safe and responsible.	
Regulatory signs/markings	Tell you what you have to do like a Stop Sign	
Rural	Country	
Shoulder	The stone gravel or grass along the side of the road.	
Stationary	Something that is not moving.	
Standing Water	Water puddles on the road	
Tractor trailer	Semi-Truck.	
Turnabout	Turn around.	
Uncontrolled Intersection	An intersection with no traffic light stop or yield sign	
Unprotected rail crossing	A railroad crossing with no gates or lights.	
Urban	City	
Utilize	Use.	
Visual Cue	A visual indicator of when to do something	Visual lead
	you are looking ahead.	How far
Yield	Wait for someone else to go.	

Abbreviations:

ABS	Anti-Lock Brake System	ESC	Electronic Stability Control
PDA	Perceive Decide Act		

Mr. R's A+ Driving school Instructors contact #s.

Mr. Nelson, 989-798-1604 Mrs. Salinas, 989-798-2581
Mrs. Stewart, 989-868-1017 Mrs. Bourbina, 989-928-0768
Mrs. Leach, 989-863-8851 Mrs. Tucker 989-513-5683

PLEASE TEXT

We cannot answer the phone when we drive.

MANDATORY CHAPTER READING ASSIGNMENT LIST

Day 1. Ch. 4 pg 23-25 (pdf 37-39) Day 6, Ch. 7 pg 64-67 (pdf 78-81)
Day 2. Ch. 5 (pdf 55-66) Day 7, Ch. 6 (pdf 67-71)
Day 3. Ch. 4 pg 26-31 (pdf 39-45) Day 8, Ch. 4 pg31-33 (pdf 45-46)
Day 4. Ch. 4,pg 33-39 (pdf 47-53) Day 9, Ch. 1 pg 4-9 (pdf 18-23) &
Day 5. Ch. 7 pg 59-63 (pdf 73-77) Review Ch. 4 (pdf 37-53)
Day 10, Ch. 2, (pdf 27-31) & Review Ch. 6,7 (pdf 67-81)

1. What is the largest cause of collisions
2. List some driver errors
3. Newly licensed 16-year-olds are _____ times more likely than

an adult to crash and _____ times more likely than 18-year-olds.

Level 1 and level 2 drivers are considered _____

4. What are the three parts of the Highway Transportation System
5. Young drivers can reduce their risk by?

- 6. How old must your Level 1 driving coach be?**
- 7. Why should we check around a car before we get in?**
- 8. When getting into a car parked at the curb you should always walk around the front of the car WHY?**
- 9. What else should we always check before driving?**
- 10. Why should we check fluid levels?**
- 11. If your car has air bags you should sit at least how many inches from the steering wheel?**
- 12. The top of the steering wheel should not be above your?**
- 13. Adjust your seat so your feet can operate the pedals without**
- 14. For normal driving conditions where should your hands be on the wheel of a car with an airbag?**
- 15. When should you adjust your mirrors, Before or after you adjust your seat?**

- 16. If adjusted properly, what should you see out the rearview mirror?**
- 17. The Passenger Side makes things look?**
- 18. There are two advantages of the enhanced mirror settings.**
- 19. Head restraints should be adjusted to be behind your neck or your head?**
- 20. Head restraints are most effective in what type of crashes?**
- 21. The term that means, objects that are moving keep moving objects at rest stay at rest and, the main reason we need safety belts**
- 22. The parts of a car that are designed to crush to absorb impact are called**
- 23. Airbags go with?**



24. **If This light comes on when your driving what does mean?**
25. **Where can you find out what all the warning lights mean?**
26. **When do you use hand over hand steering?**
27. **Describe hand over hand steering**
28. **Why is it a bad idea to reach inside the wheel to turn?**
29. **Where should you target the vehicle when driving in a straight line?**
30. **Give an example of where you might use each type of Acceleration**

Idle

Light

Progressive

Thrust

- 31. In order to ensure your front wheels are even with the curb for a right turn or correctly positioned for a left turn what is the visual for right and left turns.**
- 32. What does ABS stand for and why are they a great safety item?**
- 33. What do you do if your ABS brakes are not working?**
- 34. The first step in decelerating (slowing down) is to?**
- 35. Describe the proper driver position for backing straight back**
- 36. Always back slowly when backing your right to left movement is**
- 37. backing out of an angled parking space you should always look over your?**
- 38. How far from an intersection does the LAW say you should signal before a turn?**

---- Feet = Approximately ----a city block.

In higher speed rural areas ---mile.

- 39. When turning or changing directions, when is it not necessary to use a turn signal?**
- 40. Besides turning left and right, give 4 other examples of when to use turn signals.**
- 41. If your vehicle brakes down while driving, what is the first thing to do after safely getting over to the right shoulder?**
- 42. When is the ONE time you can ignore a traffic light or sign**
- 43. What three things are traffic signs used for?**
 - 1**
 - 2**
 - 3**
- 44. What does “45 while workers present” mean.**
- 45. What else besides workers must you watch out for in construction zones?**

46. The posted speed limit is the “safe and prudent” speed in good weather conditions. Some times speed limits are not posted and you need to determine speed based on the type of road. If not Posted what is the Speed Limit in

a. mobile home park ___

b. in parks school zones, residential, subdivisions and business zones ___

c. in construction zones ,survey areas, road maintenance areas ___

d. Rural (country) roads and Highways ___ e. Freeways (Interstates) ___

47. What do you do if you see a car coming at you going the wrong way on a one way street?

48. What does a do not enter sign mean?

49. What color are motorist information signs?

50. What color are recreational signs?

51. What do you do if a signal light is not working?

52. When can you turn right on red?

53. When can you turn LEFT on red?

- 54. What is the difference between a flashing yellow light and a flashing yellow arrow?**

Flashing yellow light

Flashing yellow arrow

- 55. What color light does oncoming traffic have if you have a flashing yellow arrow?**
- 56. The light has been green for a long time what do you call this light**
- 57. In order to spot stale green lights you should be looking for traffic signals approximately how far ahead**
- 58. What do “Lane Use Lights” tell you?**
- 59. Describe the lane markings used to indicate a passing and a no passing zone .**
- 60. You are driving down the expressway and you notice the lanes are marked with solid white lines what does this mean**
- 61. If you were driving down the Interstate and all the reflectors were red what would you do**

62. **RUMBLE STRIPS** in the road tell you need to slow down. **RUMBLE STRIPS** along the side of the road tell you?

63. When should you cover your brake?

Give examples

64. What is the difference between riding you brake and covering your brake?

65. You see brake lights flashing ahead, what do you do?

66. Losing ___ seconds of Reaction time can double your chances of a crash

67. When stopping unexpectedly, how can you best warn the driver behind you of your stop?

68. At a traffic light turning left it is best to?

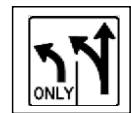
Why?

69. When Stopping for a Train how far back from the crossing should you stop?

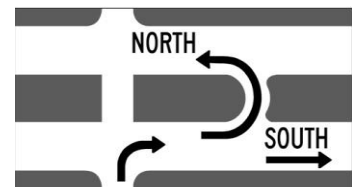
70. Do most railroad crossings have automatic warning signs?

71. On a signaled and gated RR Crossing, when is it safe and legal to proceed through the crossing?
72. Just like motorcycles can be difficult to judge their speed and distance because of their small size, Trains can be hard to judge their speed and distance because of their?
73. There is a set of railroad tracks ahead and just past them is a Traffic Light what must you be cautious of before you start to cross the railroad tracks?

74. When turning left off of a three lane one way street, which lane do you turn from?



75. What is the benefit of a "Michigan Left"?



76. What is Central Vision used for?
77. What is Peripheral Vision sensitive to?
78. Two systems to help you drive. S.E.E. which means, SEARCH, EVALUATE, EXECUTE, The other is P.D.A. which means PREDICT, DECIDE, ACT. Both systems are designed to allow you to

- 79. How do you search?**
- 80. Why is it important to have an “Orderly Search Pattern”?**
- 81. The largest cause of crashes is?**
- 82. What is your “Field of Vision”**
- 83. How far should you be looking ahead?**
- 84. What is searching?**
- 85. The faster you go the farther ahead you need to look for hazard?
TRUE FALSE WHY?**
- 86. How can you tell a driver is not searching far enough ahead?**

- 87. When crossing a road, what directions should you look and in what order?**
- 88. When turning right or left your last check should always be?**
- 89. Whenever you prepare to slow down, stop, or see trouble ahead what do you check?**
- 90. Why should you check your rearview mirror before braking to a stop?**
- 91. How often should you check your mirrors?**
- 92. Your Search has to change in different “Driving Environments” What do you actively search for in the**

Country?

City?

Remember in cities your view can be blocked by traffic and buildings

- 93. What does Right of Way laws are written in terms of who must yield mean.**
- 94. If someone is driving unsafely what must you do?**
- 95. At a 4 way stop, if 2 cars arrive together, who goes first?**

- 96. 2 cars are stopped at an intersection facing each other; one is turning left, who yields?**
- 97. How can you identify a funeral procession and what should you do?**
- 98. What coin can you use to quickly check tire tread**
- 99. There is no crosswalk but a pedestrian is crossing your lane you should.**
- 100. If you see a person with a white cane or guide dog trying to cross the street what do you do?**
- 101. Can you ever get a ticket for driving the posted speed limit?**

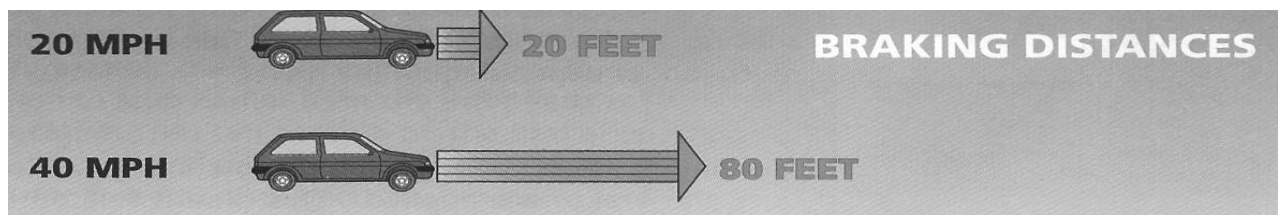
Give examples.

- 102. Can you get a ticket for eating or drinking in your car?**
- 103. What types of collisions are most common when talking on cell phones?**
- 104. Your hands free phone rings while driving. What do you do?**
- 105. When do you think most food related accidents happen?**

- 106. When driving in fog, should you use your parking lights, low beam headlights, or high beam headlights? Explain why.**
- 107. If your Front tire “Blows Out” what will happen to your steering?**
- 108. If a rear wheel Blows out the car will sway back and forth from.**
- 109. Explain what you should do if your brakes fail while driving?**
- 1**
- 2**
- 3**
- 110. If Brakes fail completely the only thing that can fully stop you is**
- 111. Explain what you would do if your right wheels accidentally run off the edge of the road at highway speed.**
- 112. Never lean down to release a stuck accelerator (GAS PEDAL). You should**
- 113. Children under 12 should always be seated where in a car?**

- 114. Children under ____ must be in a child safety seat and children under ____ AND less than ____ feet ____ inches tall
must be in a “CHILD SAFETY RESTRAINT” (booster)**
- 115. Where should child safety seats always be installed in a car with airbags?**
- 116. Can you make a “U TURN” in a residential zone?**
- 117. When is the road slipperiest during a rain storm?**
- 118. Driving down the expressway You see a Police car with lights flashing on the shoulder of the road you should**
- 119. What do you do if emergency vehicles are approaching with lights and sirens?**
- 120. When approaching a stopped school bus with flashing red lights, does traffic have to stop on both sides of the road?**
- 121. Describe a situation where you would NOT have to stop for a stopped school bus with red lights flashing or an emergency vehicle**

122. Describe what kind of ticket you would get for passing a school bus with flashing red lights.
123. What does it mean when the yellow lights on top of a bus go on?
124. When stopped behind a school bus with red flashing lights, how far from the bus must you stop?
125. What do Flashing Hazard Lights on a bus mean
126. Where are they located on the bus?
127. If you see a bus pulled to the shoulder of the road with their 4 way hazard flashers on what should you do.



128. According to the chart what happens to braking distance when speed doubles
129. How much do you think the force of impact would increase if your speed doubled

130. What is the difference between braking distance and stopping distance?

Braking distance

Stopping distance

131. List at least 6 factors that effect your braking distance

- | | | |
|-----------|-----------|-----------|
| 1. | 2. | 3. |
| 4. | 5. | 6. |

132. List the 3 ingredients that make up your total STOPPING distance

- | | | |
|-----------|-----------|-----------|
| 1. | 2. | 3. |
|-----------|-----------|-----------|

133. Explain the how to check your following distance

134. How do you maintain your following distance if someone lane changes in front of you?

135. In good weather conditions to have enough time to brake out of trouble in city driving your following distance

should be _____ on the highway it should be _____

Interstates_____

136. On slippery surfaces how long should your following distance be?

137. Should you follow closely before passing a large vehicle?

- 138. You Should always stop back about one car length behind a vehicle in front of you with your foot on the brake.**
WHY?
- 139. If you have a distraction in your car you should increase what?**
- 140. When driving near parked cars what is the best way to avoid hitting someone getting in or out of their car or someone walking between cars?**
- 141. It is best to have how much space on both sides of your vehicle**
- 142. On a 30 miles per hour road you need about how much space for most maneuvers, turning ,entering traffic, crossing intersections**
- 143. Turning right takes a larger gap then crossing an intersection WHY?**
- 144. If you are driving in another driver's blind spot what should you do?**

145. When cresting a hill or “entering a curve” you should slow down and cover your brake and move to the right side of your lane.

True or False Why?

146. Explain what effects gravity will have on a car going

DOWNHILL.?

UPHILL.?

147. How do you keep your speed constant (the same) while driving up and down hills?

148. What effects will inertia have on your vehicle when driving into a sharp curve?

149. To reduce the effects of inertia in a curve, when should you begin to slow down?

150. What happens if you brake and turn at the same time?

151. When you see several Hazards or “Points Of Conflict” ahead you should adjust your speed and position to?

1

2

152. Some Hazards Can't be separated. When that happens we "COMPROMISE SPACE" that means we give as much space as possible to the greatest hazard.

If we were driving down a narrow street with a row of parked cars on one side and a line of oncoming cars on the other how would we "COMPROMISE SPACE"?

153. What is the main purpose for tread on your tires?

154. You notice that the wear bars on your tires are even with the tread what should you do?

155. Describe hydroplaning

156. When is hydroplaning most likely to occur?

1.

2.

3.

157. Why is it so hard to identify that you are hydroplaning?

158. What should you do if the vehicle you are driving begins to hydroplane?

159. What are some clues that you or cars around you are in danger of hydroplaning?

1

2

3

4.

160. What causes a “Power Skid“ ?

161. What happens in a front wheel skid or front wheel lock up?

Rear wheel skid or rear wheel lock up?

162. If you are going up a steep hill with cruise control on it will try to maintain your speed by accelerating hard. Why would it be a bad idea to have cruise control on if it were raining.

163. What do you do if your car starts to skid?

164. When you brake load shifts to the front tires. What happens when you accelerate?

165. What are the three MOST important ways you can safely drive on ice?

1

2

- 166. You are driving on an icy road, scanning ahead you see an object blocking your lane?**
- 167. In bad weather when visibility is reduced you need to work especially hard to see hazards because?**
- 168. Specifically how do you use your brake pedal to slow to a stop on an icy road?**
- 169. What do they call invisible ice?**
- 170. what is the most dangerous kind of road condition**
- 171. Should you cut closely in front of a truck after passing**
- 172. On a three-lane interstate, Why should you avoid driving between two trucks?**
- 173. Large trucks turn wide, they may use any and all lanes to complete there turns.**
- TRUE FALSE**
- 174. Should you stay out of the space on the right side of a tractor trailer at an intersection?**

WHY

- 175. Oncoming and passing trucks, can cause a great deal of wind turbulence how can you best avoid the effects?.**
- 176. Kids can dart out of cars Make sure if you have anyone under 6 in your car that they do not get out without someone.**
- 177. A pedestrian may appear unexpectedly when you approach a?**
- 178. Pedestrians should only cross at controlled intersections when they have a**
- 179. The light turns green what do you do?**
- 180. How much space to the side does the law say cars must give bicycles?**
- 181. Are you allowed to pass a bicycle by crossing a solid yellow line (no passing zone)**
- 182. Why would you use a Dutch Reach (reaching Across yourself with your right hand to open your left door (drivers door)**

-
- 183. Can you expect a kid on a bike to know all the rules?**
- 184. Suppose you want to pass a bicycle but there is oncoming traffic how would you separate those hazards?**
- 185. Should you stay close to a motorcycle?**
- 186. Are motorcycles easy to see?**
- 187. Do you need a motorcycle endorsement on your driver's license to operate motorcycle in Michigan?**
- 188. You should ALWAYS have your low beam or daytime headlights on because it makes you easier to see , When does the law require it?**
- 189. If visibility is poor, which lane marker can best guide you?**
- 190. When driving into Fog what is the one "safe assumption" you can make?**
- 191. Explain what is meant by "over driving" your head lights?**

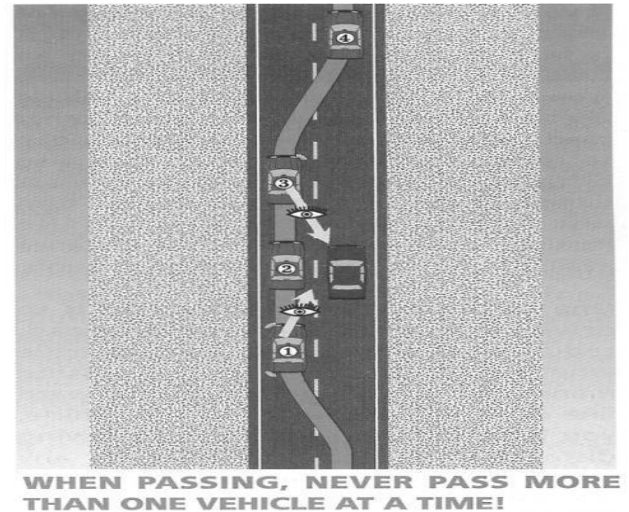
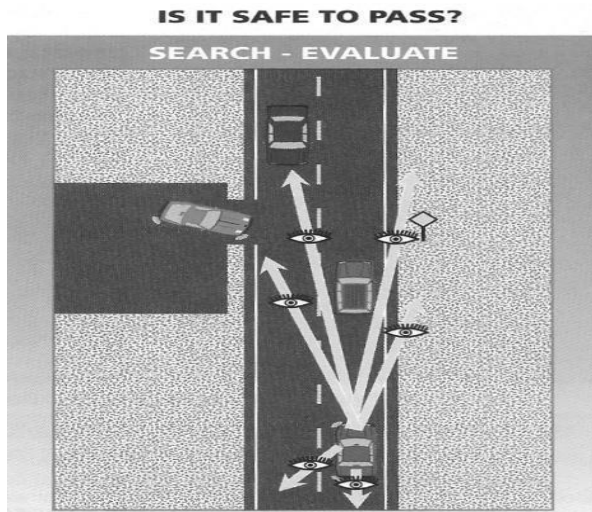
- 192. What should you do if you are overdriving your headlights?**
- 193. At night dim your headlight _____ feet from an oncoming car so we do not blind them**
- 194. If we are behind a car at night how many feet from the car should we dim our lights so we do not blind them from behind**
- 195. Is it ever a good idea to use high beams in the dark areas of a city?**
- 196. What should you do when approaching an oncoming car with their bright lights on?**
- 197. It takes how long for your eyes to recover from high beam headlight glare?**
- 198. When does the LAW say you MUST have your headlights on?**
- 199. What should you do if your headlights are not working?**

- 200. Exits ramps can be from the right or left lanes. Why must you start searching for your exit early?**
- 201. Why are left exit and entrance ramps difficult.?**
- 202. Anytime your driving in the right lane of the interstate you must Expect and watch for**
- 203. On a three lane interstate which lane should normally use?**
- 204. Merging Traffic MUST yield to traffic on the freeway?**
- 205. Traveling in the right lane of the interstate you see several cars trying to merge ahead what's the best thing to do?**
- 206. When can you use an EMERGENCY CROSSOVER on an Interstate?**
- 207. In order to merge your speed must be?**
- 208. When merging on the interstate if cars are not making room for you and traffic is stopping what can you do.**
- 209. If your entrance ramp is short will you need a longer or shorter gap to enter traffic?**

WHY?

- 210. Your approaching the exit ramp you want to take but there is a concert going on and the ramp is backing up with traffic what do you do?**
- 211. You are getting on the expressway and you notice you are on the wrong ramp**
- 212. When choosing a ramp before entering the highway what is an important clue to look for**
- 213. Should you slow down before your exit?**
- 214. Rural Road conditions can be dangerous,**
- 215. When following behind another car on a gravel road you should drop back WHY?**
- 216. Strong “CROSS WINDS” can actually push cars into oncoming lanes. What’s the best way to prevent this?**
- 217. Are you allowed to pass a slow moving vehicle while you are in a no passing zone?**

- 218. You may see horse along the side of the road and we must try not to spook them. What is another name for a horseback rider.**
- 219. If you are headed in the wrong direction on a country road what is the safest way to turn about?**
- 220. How can you tell you might be approaching a hidden driveway on a country road?**
- 221. Sometimes roads close for construction, flooding, snow or accidents how will you know**
- 222. When is it ILLEGAL to PASS on a TWO LANE, TWO WAY road?**
- | | |
|----------|----------|
| 1 | 2 |
| 3 | 4 |
| 5 | 6 |
- 223. Is it Legal if you can start but not quite complete your pass before the beginning of a no passing zone?**
- 224. Once you are certain it is LEGAL to pass on a TWO LANE, TWO WAY road, What is the MOST important HAZZARD you must concern yourself with?**



225. After passing another vehicle, how do you know when it is safe to return to your lane?
226. How many seconds does it take to pass a car going 10 miles per hour slower than you? ____ 5 miles per hour slower than you? ____
227. Why **SHOULDN'T** you pass while approaching hills or curves?
228. Michigan Law Requires you to "Give Way" when someone is passing this means?
229. You are passing on a two lane road when should you make your final decision on when to pass or "ABORT THE PASS"
230. What would you do if someone tries to pass you while rounding a sharp, blind curve?

- 231. Is the shoulder likely to have good traction.**
- 232. If you must hit a car or any object you can reduce the consequences by hitting it at an angle (glancing blow or sideswipe)?**

WHY?

- 233. Is it LEGAL to exceed the posted speed limit when passing another vehicle?**
- 234. Describe a situation where it would be LEGAL to pass on the right.**
- 235. Is it LEGAL to pass on the right if your wheels leave the pavement?**
- 236. If a large animal appears on the road concentrate on**
- 237. In order to prevent fatal and serious accidents Roundabouts force people to slow down. What is the maximum speed for all “Round A Bouts”?**
- 238. What sign is used to control traffic at “Round A Bouts”**
- 239. When should you enter the Round A Bout?**
- 240. How can you prevent “Road Rage”**

- 241. What is the 1st “Anger Management Tool” to use to try to keep an aggressive driver from becoming a road rager?**
- 242. What do you do if you feel threatened by a “Road Rager”**
- 243. Can feeling happy or sad effect driving?**
- 244. Fatigue makes it hard to perceive or respond to hazards
It can also make it**
- 245. If you are tired, should you increase your following distance?**

Why?

- 246. If you go short on sleep for a couple days you develop a “Sleep Debt“. What is the only way to repay a “Sleep Debt“**
- 247. When you get so tired you can’t keep your eyes open
you must?**
- 248. Can even one drink effect a person’s ability to drive?**
- 249. Which organ of the body is affected first by alcohol?**
- 250. What is the first thing effected by alcohol**

251. What are some ways alcohol affects you?

- 1.**
- 2.**
- 3.**
- 4.**

252 Explain Michigan's Implied consent law.

253 How do you take a breath test?

254 If you are under 21 have been drinking and are walking home what can you be charged with?

255 What is the legal limit for blood alcohol content in Michigan for an adult 21 and over?

256 What is the only way for someone to SOBER UP?

257 What is the most significant effect marijuana will have on your driving?

258 before taking any medicine and driving you should?

259 "Depressant drugs "such as Heroin, Morphine, Codeine, and Oxy-Cotan are powerful drugs, they should never be taken before driving, WHY?

- 260 Amphetamines, uppers, speed and 5 hour energies give a false sense of alertness.**
- 261 If Safety or driver assistance technology takes over it usually means the driver has made a significant error.**
- 262 Do tire pressure monitoring systems tell you when your tire pressure is correct.**
- 263 How can tell you when your tire pressure is correct.**
- 264 When the system detects something in your blindspot where will the warning light most likely be.**
- 265 Regardless of the type quantity or quality of advanced safety technology in your car who is responsible for driving?**
- 266 When passing or changing lanes your line of site can be easily blocked. Cars in the far lane may be changing lanes also. How do you check a blind spot?**
- 267 how do you properly change lanes and keep a driver in your blind spot from freezing in position**
- 268 If you are driving in another driver's blind spot what should you do?**

269 You must be careful around construction zones because?



1

2

3

270 A car suddenly pulls out right in front of you what is the best way to avoid a crash?

WHY?

271 If you drive through a deep puddle what is the best way to test and dry off your brakes

272 At 40 mph, how many feet will it take you to stop?

Dry

Wet

Gravel

Ice

273 During the winter, list 3 areas where you are MOST likely to encounter ice on the road.

274 If pulled over by a police officer what should you keep in plain view at all times?

POP QUIZ



A

B

C

D

T F

